



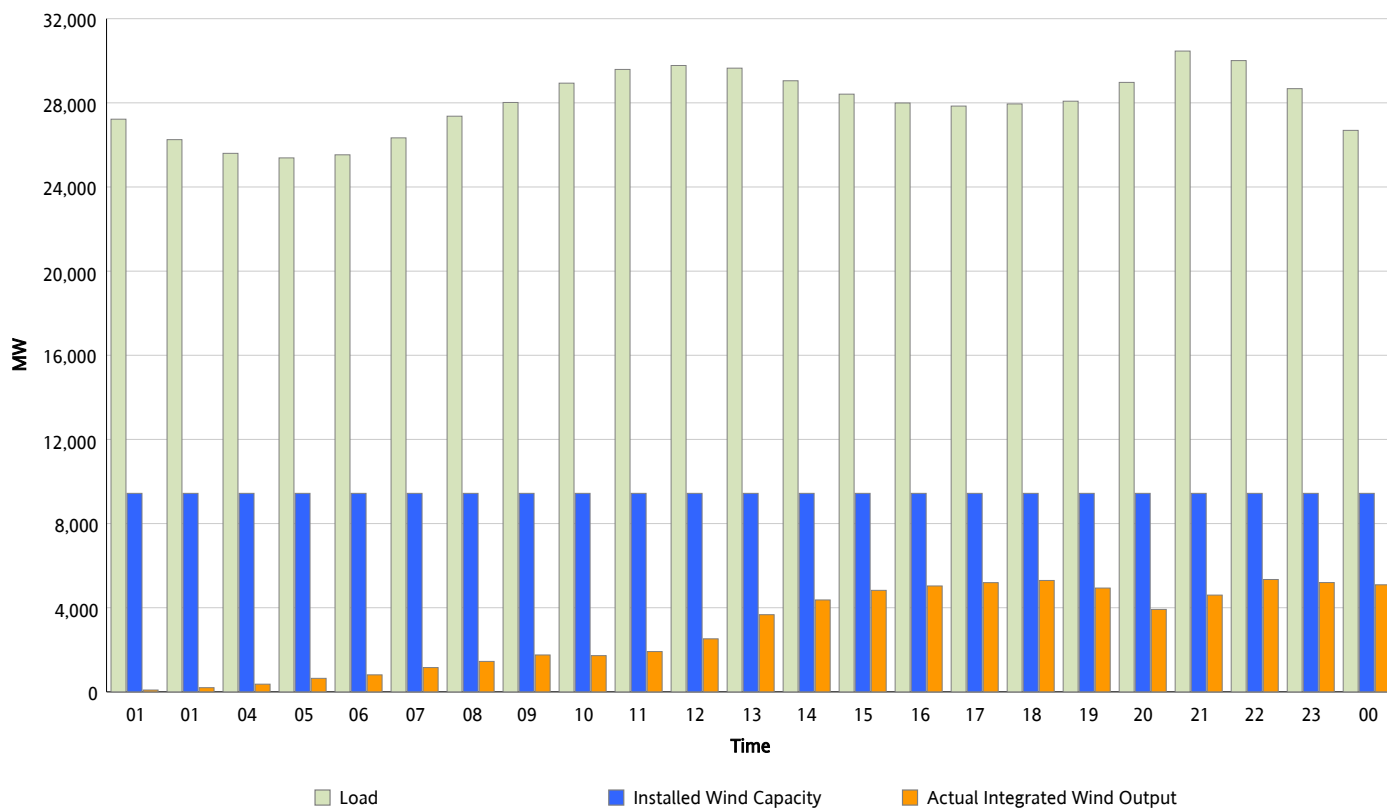
ERCOT Grid Operations

Wind Integration Report : 03/11/2012

Peak Load	30,461 MW
Load Peak Hour (HE)	21
Wind Over Peak	4,600 MW
Wind Record 03/07/12	7,599 MW
Max Wind Value*	5,589 MW
Wind Peak Time	22:04
Wind Integration %	19.04 %

Hourly Average Actual Load vs. Actual Wind Output

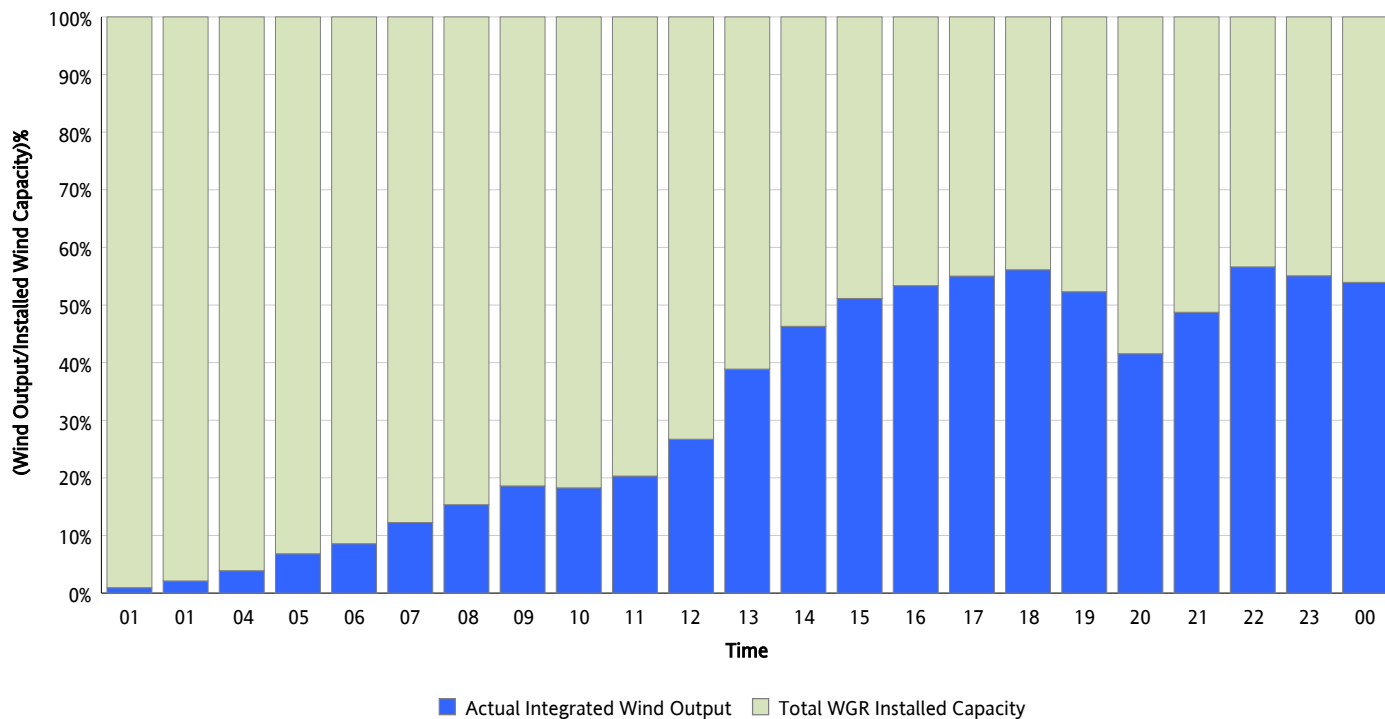
03/11/2012



* Wind Record and Wind Max represent instantaneous values and the rest of the values are integrated over the hour

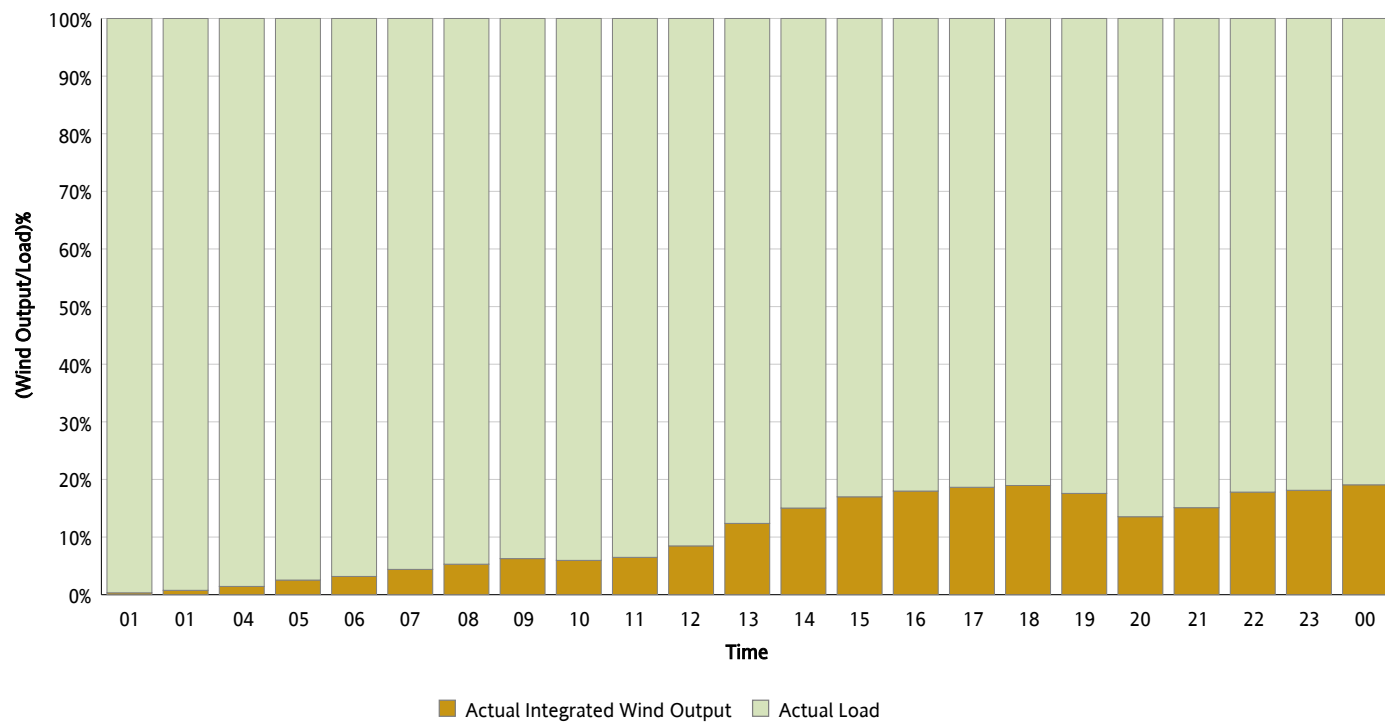
Actual Wind Output as a Percentage of the Total Installed Wind Capacity

03/11/2012



Actual Wind Output as a Percentage of the ERCOT Load

03/11/2012



ERCOT Load vs. Actual Wind Output

03/04/2012 - 03/11/2012

